



AUDREY SIDEBOARD

Page 1



Inspired by 1940s French design, handmade in England.

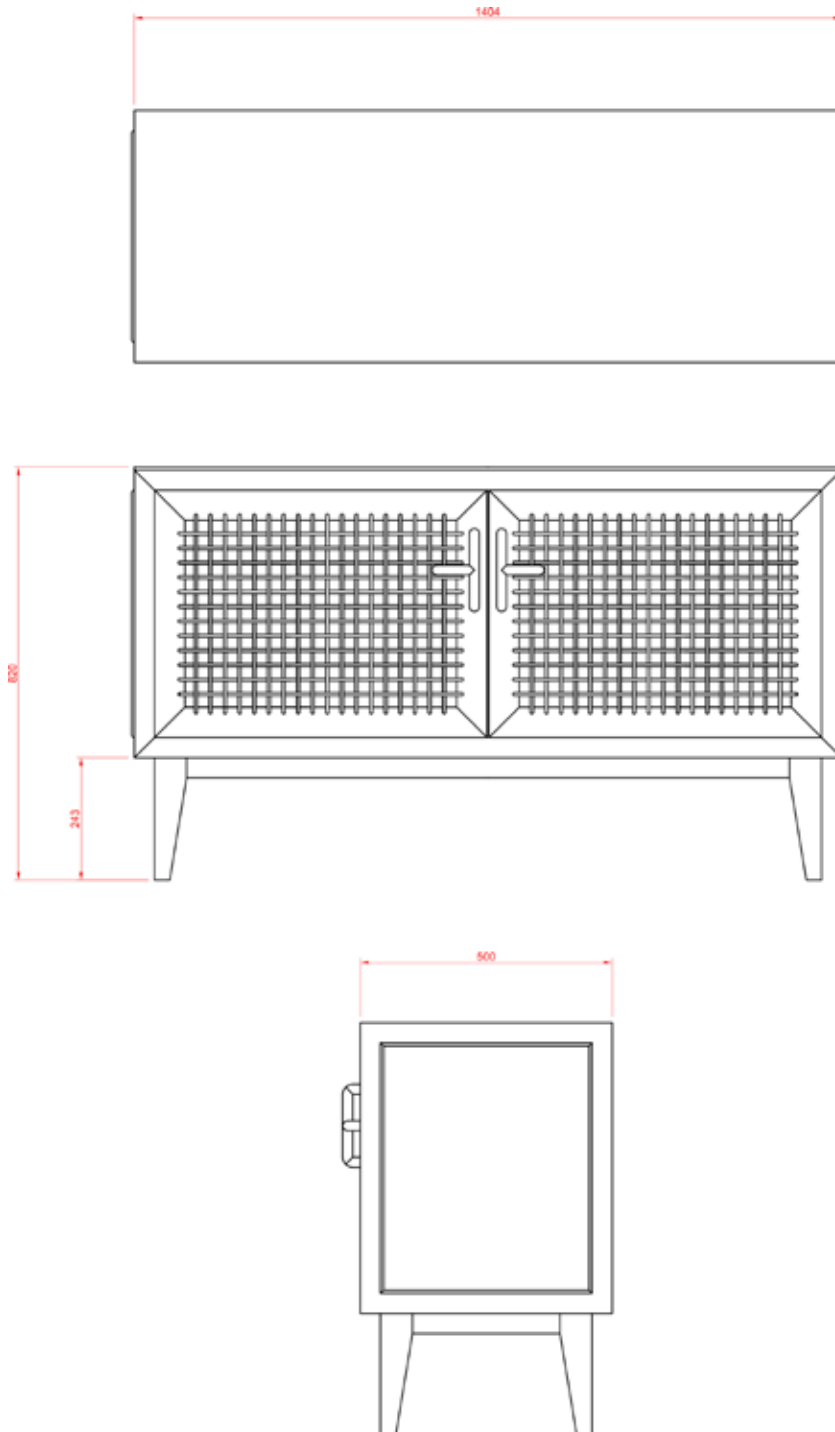
Shown here in limed oak, light lacquer, with seagrass door panel detail.

Custom sizes, alternative timbers and finishes available.

Lead time 8 - 10 weeks



AUDREY SIDEBOARD





AUDREY SIDEBOARD



Limed Oak | Light | Lacquer



Limed Oak | Medium | Lacquer



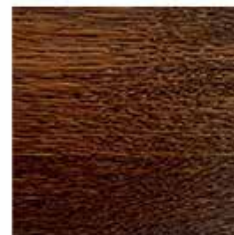
Limed Oak | Dark | Lacquer



Oak | Light | Lacquer



Oak | Medium | Lacquer



Oak | Dark | Lacquer



Walnut | Light | Lacquer



Walnut | Medium | Lacquer



Walnut | Dark | Lacquer



Walnut | Light | French Polish



Walnut | Medium | French Polish



Walnut | Dark | French Polish



Mahogany | Light | French Polish



Mahogany | Dark | French Polish



Ebonised | Lacquer

Standard timber finishes shown. Alternative timbers and finishes are available, please enquire for more details.



CARE & MAINTENANCE

Page 4

Please note that all the instructions below are suggested methods of care and maintenance. We are not responsible for any damage incurred whilst cleaning. Always try a cleaning method on a hidden area first.

PAINT LACQUER FINISHES

For regular maintenance, dust lightly with a soft cloth. Most blemishes can be wiped off gently with a soft dampened cloth. Do not rub with abrasive materials or use detergents or solvents.

Do not use furniture wax and/or spray polishes as these will affect the finish.

Anything with a rough or abrasive underside, for example cups or plates, will scratch the finish, however slightly. Always use soft base coasters.

Avoid direct sunlight and high temperatures as this will compromise the finish.

FRENCH POLISH FINISHES

For regular maintenance, dust lightly with a soft dry cloth following the timber's grain. Do not use a dampened cloth. Wipe up any spillages quickly as liquids compromise French polish. Do not rub with abrasive materials or use detergents or solvents.

Clear wax can be used which will add a little shine. The only products to use are pure, clear furniture waxes by quality brands. It is important not to use waxes with cleaning agents or turpentine. The wax should be applied sparingly with a soft cloth following the timber's grain and wiped off quickly before it dries. Application will be easier if the wax is warm. Buff to shine using a clean dry soft cloth, again following the timber's grain.

Do not use spray polishes as these will affect the finish.

Anything with a rough or abrasive underside, for example cups or plates, will scratch the finish, however slightly. Always use soft base coasters.

Avoid direct sunlight and high temperature as this will compromise the finish.



CARE & MAINTENANCE

Page 5

PU LACQUER FINISHES

For regular maintenance, dust lightly with a soft cloth following the timber's grain. Most blemishes can be wiped off gently with a soft dampened cloth, again following the timber's grain. Do not rub with abrasive materials or use detergents or solvents.

Do not use furniture wax and/or spray polishes as these will affect the finish.

Anything with a rough or abrasive underside, for example cups or plates, will scratch the finish, however slightly. Always use soft base coasters.

Avoid direct sunlight and high temperatures as this will compromise the finish.